

NEW ENTERPRISE ACADEMY

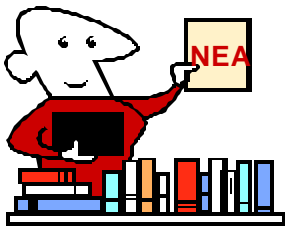
"Student-centered, parent-supported, independent school with a global perspective"



HOW CAN I HELP NEA BUILD A LIBRARY?

Remember all of those
SCHOLASTIC BOOK
ORDERS?

You can donate them to



LIBRARY BOOK DRIVE QUIZ

*Your successful answer will help build
the NEA library so all students may
expand their reading skills.*

- Donate New Children's Books**
- Donate Gently-Used Children's Books**
- Make a Monetary Contribution to the Library Fund.**

For additional information, call (618) 972-7947 or visit
www.NewEnterpriseAcademy.com

DROP OFF LOCATIONS WILL BE ANNOUNCED.



**If you're in the O'Fallon area,
please call (618) 444-3285
to schedule a pick-up.**

New Enterprise Academy (NEA) located in the heart of O'Fallon, Illinois, will open its doors in August 17, 2006. NEA will provide a student-centered educational experience of unparalleled quality in a positive, academically challenging, intercultural learning environment. Please visit our website for news and additional information. New Enterprise Academy admits students of any race, color, national and ethnic origin to all the rights, privileges, programs, and activities generally accorded or made available to students at the school. It does not discriminate on the basis of race, color, national and ethnic origin in administration of its educational policies, admissions policies, scholarship and loan programs, and athletic and other school-administered programs.